



## PRESENTATION OF SKEMA RESIDENCE

*The Residence has 172 apartments from studio to the T1bis, new and furnished with kitchen corner and bathroom:*

- Reserved for SKEMA students (154 T1 and 18 T1Bis),

| Tariff 2019                 | STUDIO  | STUDIO T1 BIS | T2                |
|-----------------------------|---------|---------------|-------------------|
| Surface                     | 23sm    | 30sm          | 37 and 42 sm      |
| Deposit                     | 404 €   | 564 €         | 650€ / 691€       |
| Rent - all charges included | 433.97€ | 594.97€       | 671.44€ / 712.99€ |

\*Included various services, furniture and equipment, and structural costs- electricity – water, insurance



### FREE SERVICES

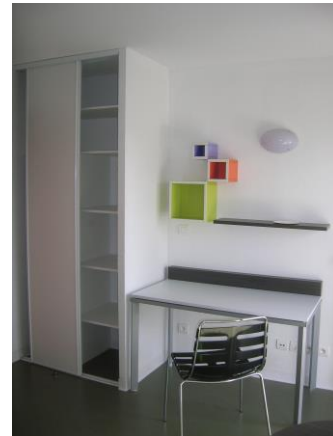
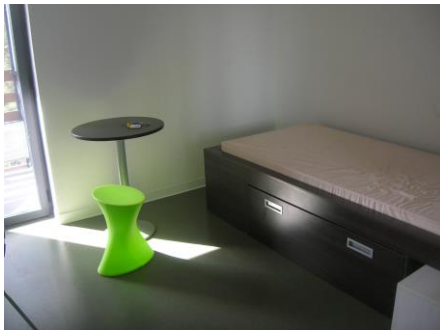
- outside free parking places behind the residence
- A team on site to help you for all your administrative or technical needs – from 9am to 5pm according to the days
- Free Intranet SKEMA Access with SKEMA code - you need a cable RJ45

## PAYING SERVICES

- A laundry (3 washing and 2 drying machines) – using coins, notes and credit card
- Underground private car places: 21.49€ for students, 35.80€ for workers and trainees.
- WIFI with WIFIRST provider : about 20€ per month

## EQUIPMENT T1 T1BIS

➤ a main room/Living room, with :



- 1 round table + 1 stool
- 1 desk + 1 chair
- 1 bed of 100 X 200 (1 person) + 2 storage spaces integrated under the bed (drawers)
- 1 Bedside table
- 1 Cupboard with hanging,
- 1 Small additional wardrobe
- Bay Window
- Balcony or terrace

➤ a kitchen corner equipped with :

- 1 sink, 2 hotplates, 1 hood, 1 refrigerator, 1 microwave, 2 cupboards down



➤ **a bathroom with:**

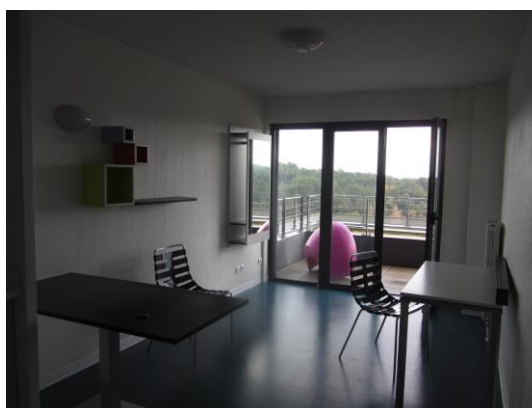
- 1 Sink with storage below, 1 mirror, 1 WC, 1 Shower



**EQUIPMENT T2- (reserved for young workers)**

**In addition to the other rooms:**

- 1 individual bedroom with a large bed – 2 persons 140cm,
- 1 big rectangular table (instead of the small one of the T1 and T1BIS)
- 1 more stool
- 1 more chair
- 2 colored plastic armchairs for inside or outside on the terrace



**ELEMENTS NOT INCLUDED**

**The Residence does not provide:**

- **Dishes:** plates, glasses, pans...
- **Bed linen:** Sheets pillows braids blankets
- **Bed and Desk Lamp.**

During your stay, the replacement of lights bulbs and sanitary Equipment will be done for you but charged on the invoice.

**RESOURCES MAXIMUM CRITERIA**

2 main criteria to be accepted in the residence:

- to be a SKEMA student during the school year, or having a contract (working or internship) during the summer period (April to August maximum)
- **to have annual income under the maximum below for social accommodation :**

**Please, check if you fill in this condition before sending your request**

Your income (or your parent’s ones) will be compared with:

- for French people paying their taxes in France : the line 25 of the “avis d’imposition 2018” on 2017 income
- for foreign people : an official document in English or French, indicating all the incomes of the student’s family for year 2017 (Present Year - 2)

We also need to know the number of persons of the family living with these incomes,

***EXEMPLE : a 4 people family (2 parents and 2 children) mustn’t have an income over 39 982€ in 2017 to be accepted in the residence in 2019.***

**Maximum income according to the type of the family**

| <u>Type of families</u> | <u>Maximum income</u> |
|-------------------------|-----------------------|
| 1 person                | 20 623€               |
| 2 persons               | 27 540€               |
| 3 persons               | 33 119€               |
| 4 persons               | 39 982€               |
| 5 persons               | 47 035€               |
| 6 persons               | 53 008€               |
| For each extra person   | + 5 912€              |

**Types of families**

| <u>Definition of families</u> |   |
|-------------------------------|---|
| 1                             | Single Person                                       |
| 2                             | Two adult persons,                                  |
| 3                             | 3 persons or 1 single person with 1 person on load, |
| 4                             | 4 persons or 1 single person with 2 persons on load |
| 5                             | 5 persons or 1 single person with 3 persons on load |
| 6                             | 6 persons or 1 single person with 4 persons on load |
| Last type                     | Per extra person                                    |