

# SKEMA US SPRING 2021 CAMPUS HEALTH GUIDELINES

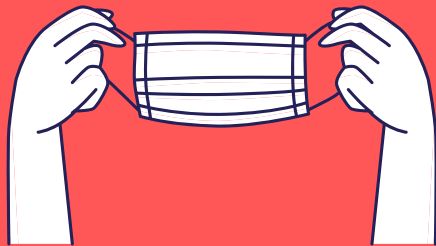
## PROTECT YOUR COMMUNITY: BE SOCIALLY RESPONSIBLE!

ALL SOCIAL DISTANCING MEASURES TAKEN ARE IN ACCORDANCE WITH LOCAL REGULATIONS ON EACH OF THE SKEMA CAMPUSES.

THESE GUIDELINES WILL BE UPDATED ACCORDING TO THE RECOMMENDATIONS OF STATE AND FEDERAL GOVERNMENT AUTHORITIES.

AVOID GATHERING IN GROUPS OF 10 OR MORE (ON AND OFF CAMPUS- INCLUDING PARTIES!).

REMEMBER: YOUR INDIVIDUAL EFFORTS WILL ENSURE CAMPUS AND ACADEMIC CONTINUITY.



Students arriving after January 19th need to contact Mariora Texier ([mariora.texier@skema.edu](mailto:mariora.texier@skema.edu)).

For any other questions, please contact:  
Najette Outtas ([najette.outtas@skema.edu](mailto:najette.outtas@skema.edu)) or  
Maud Weeks ([maud.weeks@skema.edu](mailto:maud.weeks@skema.edu))

## CAMPUS - COMMON AREAS

- Wearing a face mask is mandatory while on campus for all students, faculty, staff and visitors, without exception.
- Students will face a disciplinary committee for noncompliance.
- Signage directing traffic flow through building entrances, exits, and other common areas.
- Body temperature checks by SKEMA staff in the event of suspicion/symptoms and periodically as required by the administration.
- SKEMA Raleigh staff desks equipped with plexiglass protection.
- Self-service hand sanitizing gel dispensers installed at the entrance of the main office.
- Compliance with the distancing rules (6 ft. distancing).
- General meal and dining protocol: students, staff and faculty are responsible for their own food, cutlery and dishes. Two microwaves are available in the student lounge; disinfecting wipes will be available for sanitation after meal

## CAMPUS - CLASSROOMS/MEETING ROOMS

- Faculty are required to wear a face mask or a face mask with shield while delivering their course.
- Students are required to wear a face mask during all lectures/seminars; students will be dismissed from class and may face a disciplinary committee for noncompliance.
- Signage placed for seating and directing traffic flow.
- Self-service hand sanitizing gel dispensers in each classroom.
- Compliance with social distancing rules between each seat.
- Meetings via remote tools (such as TEAMS) whenever possible (e.g. faculty office hours, group projects, etc.).
- Students, staff, and faculty are responsible for daily cleaning of work areas after each use (disinfectant products provided).
- Faculty podium equipped with plexiglass protection.

## AGILE PEDAGOGY:

- Hybrid learning to include in-person and remote (synchronous and asynchronous) lecture formats
- Lecture recordings may be available for remote learners or students facing logistical difficulties
- Digital attendance recording for all courses, regardless of format



## If you have tested positive for COVID-19:

Inform SKEMA US by filling out the [SELF-REPORTING FORM](#) on the SKEMA USA, Raleigh Campus- Teams Channel.

### STUDENTS:

If you have these symptoms, contact NCSU Student Health Services at (919) 515-2563 for an appointment.

### ABSENCES:

If you are sick, please inform the student office [by email](#) as soon as possible. Absences will be reviewed at the end of each day (all doctor's notes should be sent to Student Office).

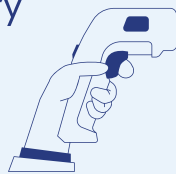
## PLEASE REMEMBER TO RESPECT THESE VITAL HEALTH PRECAUTIONARY MEASURES:

- Wash your hands regularly
- Coughing or sneezing into your elbow or a personal tissue/handkerchief
- Greet without shaking hands and avoid hugs
- Wearing a mask is mandatory



## KNOW THE SYMPTOMS OF COVID-19:

- Cough
- Shortness of breath or difficulty breathing
- Fever
- Chills
- Muscle pain
- New loss of taste or smell
- Sore throat (secondary symptom)



## DO ALL YOU CAN TO REDUCE THE SPREAD:

- If you feel sick, stay home.
- Stay at least 6 feet away from others when possible.
- Wear a face covering when close to others (6 feet away or less).
- Wash your hands often or use hand sanitizer.
- Cover coughs and sneezes with tissue or the inside of your elbow.
- Disinfect surfaces and objects, especially those frequently touched.

## ADDITIONAL RESOURCES:

SKEMA COVID-19 CHARTER:  
[www.skema.edu/skema-news/skema-coronavirus](http://www.skema.edu/skema-news/skema-coronavirus)

NCSU COVID UPDATES:  
[www.ncsu.edu/coronavirus](http://www.ncsu.edu/coronavirus)

NC GOVERNMENT UPDATES:  
[www.ncdhhs.gov](http://www.ncdhhs.gov); [www.nc.gov/covid19](http://www.nc.gov/covid19)

CDC UPDATES:  
[www.cdc.gov/coronavirus](http://www.cdc.gov/coronavirus)

EMBASSY OF FRANCE IN THE US:  
[www.franceintheus.org](http://www.franceintheus.org)

US DEPT OF HOMELAND SECURITY:  
[www.dhs.gov](http://www.dhs.gov)