

# Housing guide : offers for student



## **SKEMA Business School**

SKEMA - Campus A - Sophia



# Studapart is SKEMA Business School's partner for housing

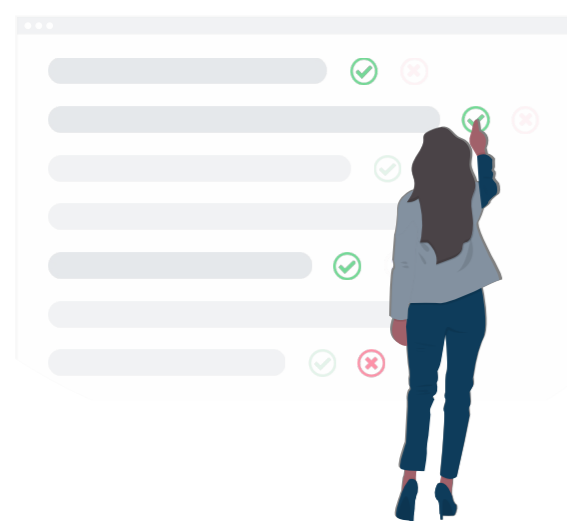


We assist you in your search for accomodation with an online housing platform

GO TO : <https://housing.skema.edu> 🔍



Sign up with your personal email adress or your school login information



## 1. VERIFIED ADS

Get access to studio, flatshare or homestay ads  
for a stay of a month or more

## 2. ONLINE BOOKING

Simple and secured ! If you're not on site when searching for your  
place, you can book remotly with owners who agree



## 3. UNIQUE GUARANTEES

- The Studapart warranty can replace the guarantor and allows you to present a complete rental record to all the lessors and on several housing sites including your school's housing platform !
- Individualized assistance until your entry in the premises

# Student residences



Private student residences have a large choice of individual apartments and flatshares. They offer a number of services that can make your life easier (reception, laundry, cafeteria...), and they make a great hang-out place to meet other students!

You can benefit from advantageous access conditions when booking your accommodation in a student residence through the platform.

GO TO :

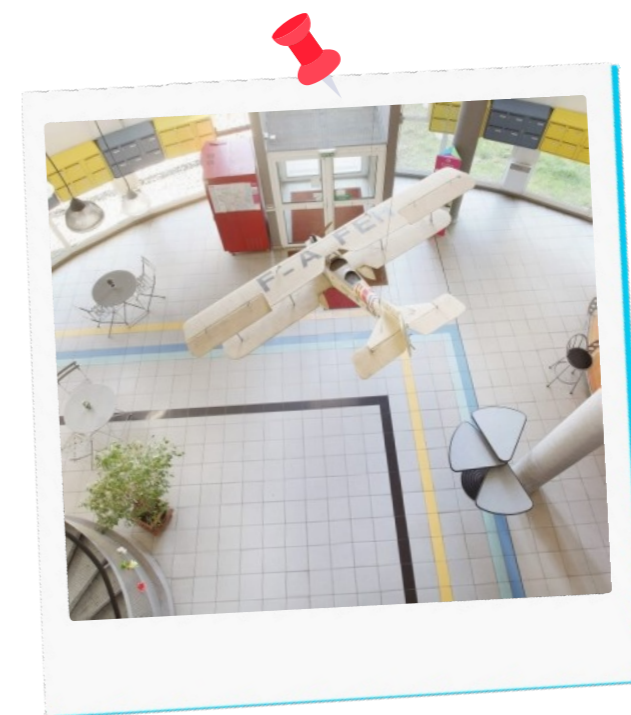
<https://housing.skema.edu> 🔍



**Einstein Sophia** 🔍

🏠 Starting from 520€

📍 0.4km from the campus



**Neoresid Saint Exupéry** 🔍

🏠 Starting from 720€

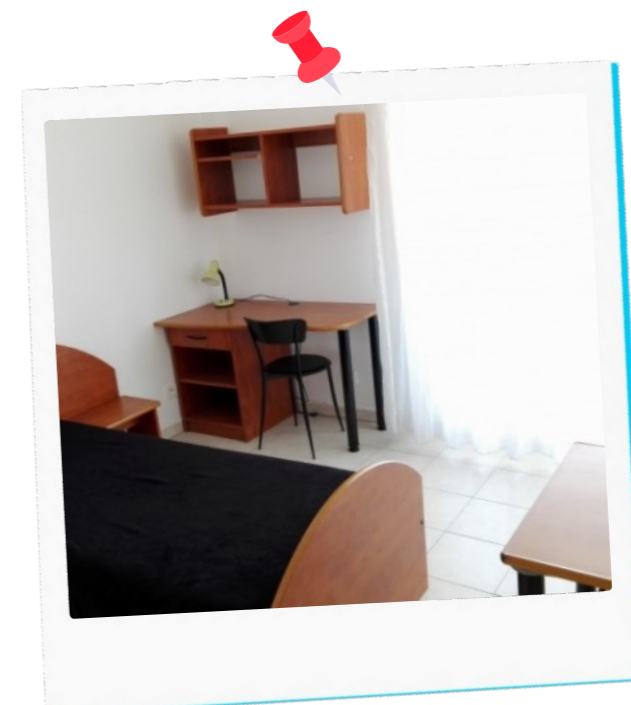
📍 1.2km from the campus



**STUDEA SOPHIA ANTIPOLIS** 🔍

🏠 Starting from 549€

📍 1.6km from the campus



**Résidence Thesa** 🔍

🏠 Starting from 645€

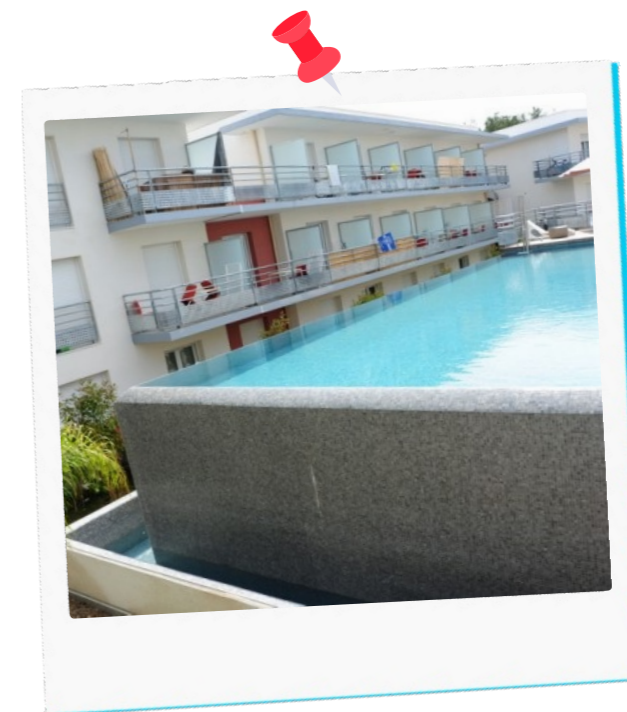
📍 1.6km from the campus



**Résidence Oxford** 🔍

🔑 Starting from 735€

📍 1.8km from the campus



**ZENITUDE LE MAESTRIA** 🔍

🔑 Starting from 645€

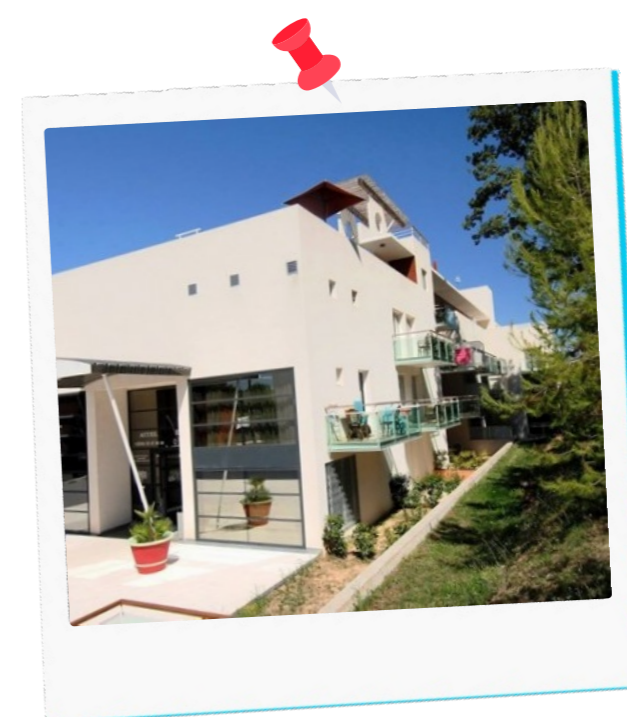
📍 1.8km from the campus



**Appart'City Antibes** 🔍

🔑 Starting from 540€

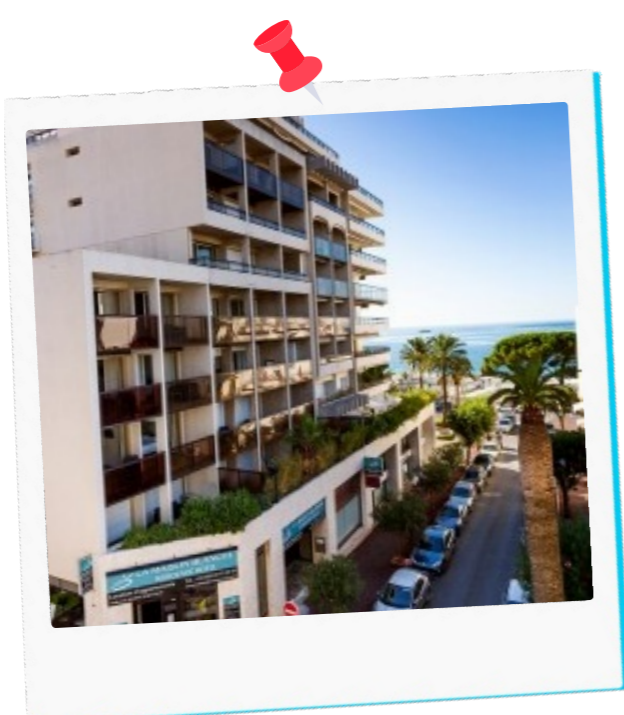
📍 3.3km from the campus



**Odalys Olympe** 🔍

🔑 Starting from 830€

📍 3.4km from the campus



**MAISON BLANCHE Résidence...** 🔍

🔑 Starting from 725€

📍 6.6km from the campus

# Private owners



Hundred of private owners provide our students with ads in studios, flatshares or homestays.

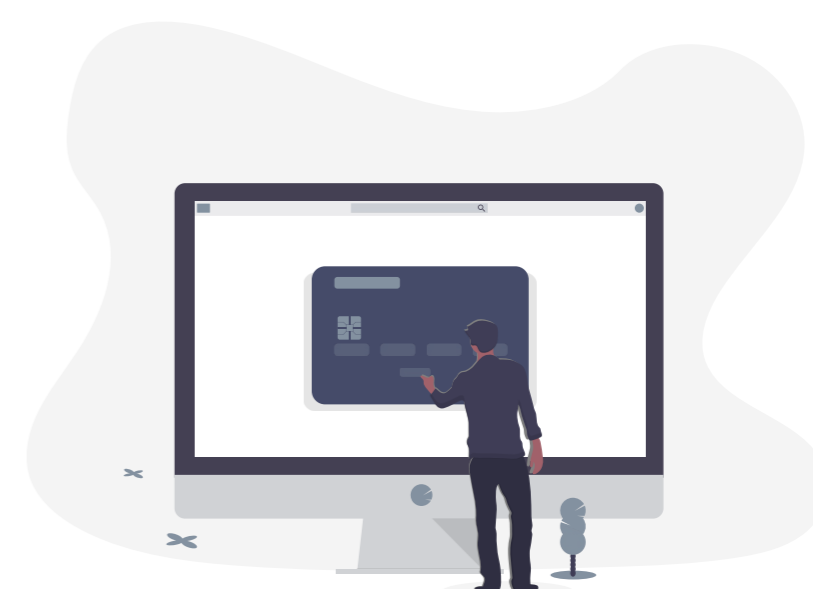
**Booking your accomodation online gives you access to the Studapart guarantee**



Assistance until your arrival  
on the premises



Re-booking in the event of  
cancellation



Studapart vouches for your  
rental record if you don't  
have a guarantor in France

GO TO :

<https://housing.skema.edu> 🔍



# Real estate agencies



The real estate agencies below offer a large choice of flats. Get in touch with them through the platform for more information!

GO TO :

<https://housing.skema.edu> 🔍



[Citya Sagi Immobilier](#) 🔍

# See you soon on [housing.skema.edu](https://housing.skema.edu) !



Any questions ?

Our multilingual support team is available  
at +33 1 80 92 64 01 or at [booking@studapart.com](mailto:booking@studapart.com)

